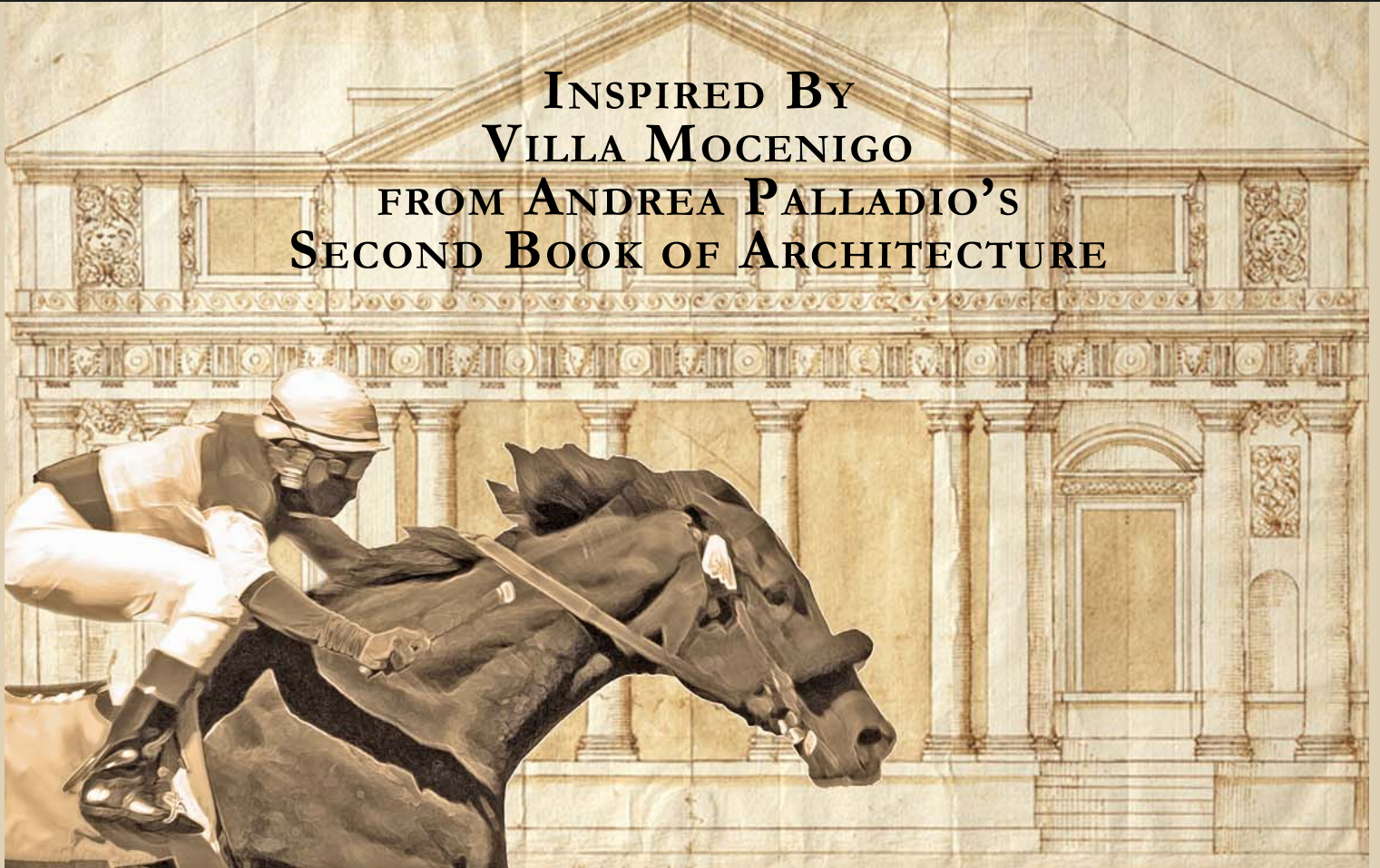


*Design Concept
for a
Race Track
Grandstand*

INSPIRED BY
VILLA MOCENIGO
FROM ANDREA PALLADIO'S
SECOND BOOK OF ARCHITECTURE

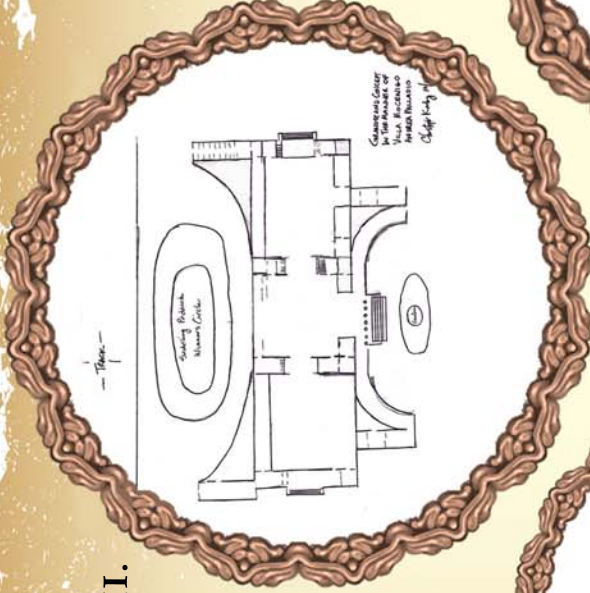


*from
Plate 58 ~ An Unrealized Design
for Villa Mocenigo*

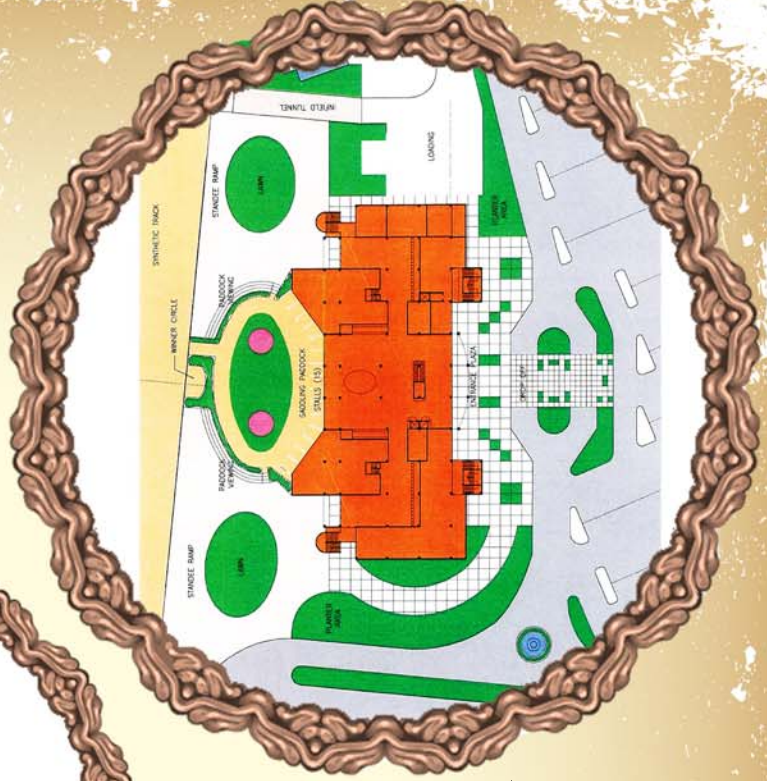
*Christopher Korby
October 2006*

III.

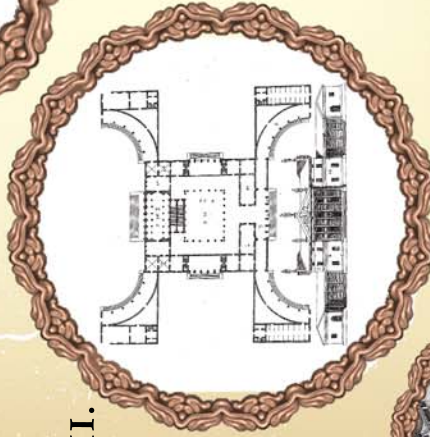
GRANDSTAND CONCEPT IN
THE MANNER OF VILLA
MOCENIGO BY
CHRISTOPHER KORB



IV. PLAZA PLAN FOR NEW
THOROUGHBRED RACING FACILITY
BY FROEHLICH, KOW & GONG
ARCHITECTS, INC.



II.



SECOND BOOK, PLATE 58 - AN
UNREALIZED DESIGN FOR
VILLA MOCENIGO

I.



THE FOUR BOOKS OF ANDREA
PALLADIO'S ARCHITECTURE



REGINA VIR TUS

THE FOUR BOOKS
OF
ANDREA PALLADIO's
ARCHITECTURE:

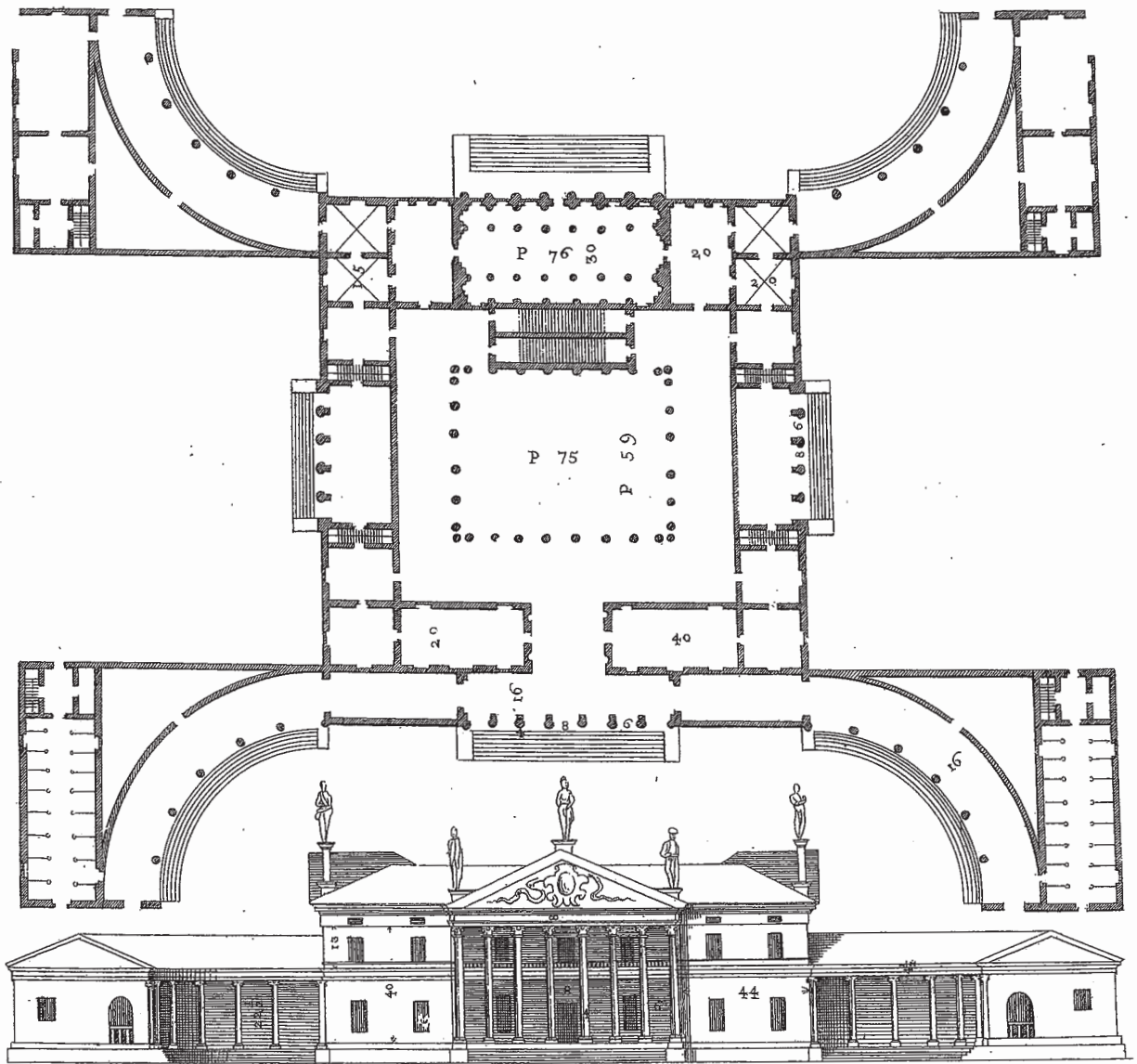
WHEREIN,
After a short Treatise of the Five ORDERS,
Those Observations that are most necessary in
BUILDING,
PRIVATE HOUSES, STREETS, BRIDGES, PLAZZAS,
& CHURCHES, and TEMPLES are treated of.

LONDON,

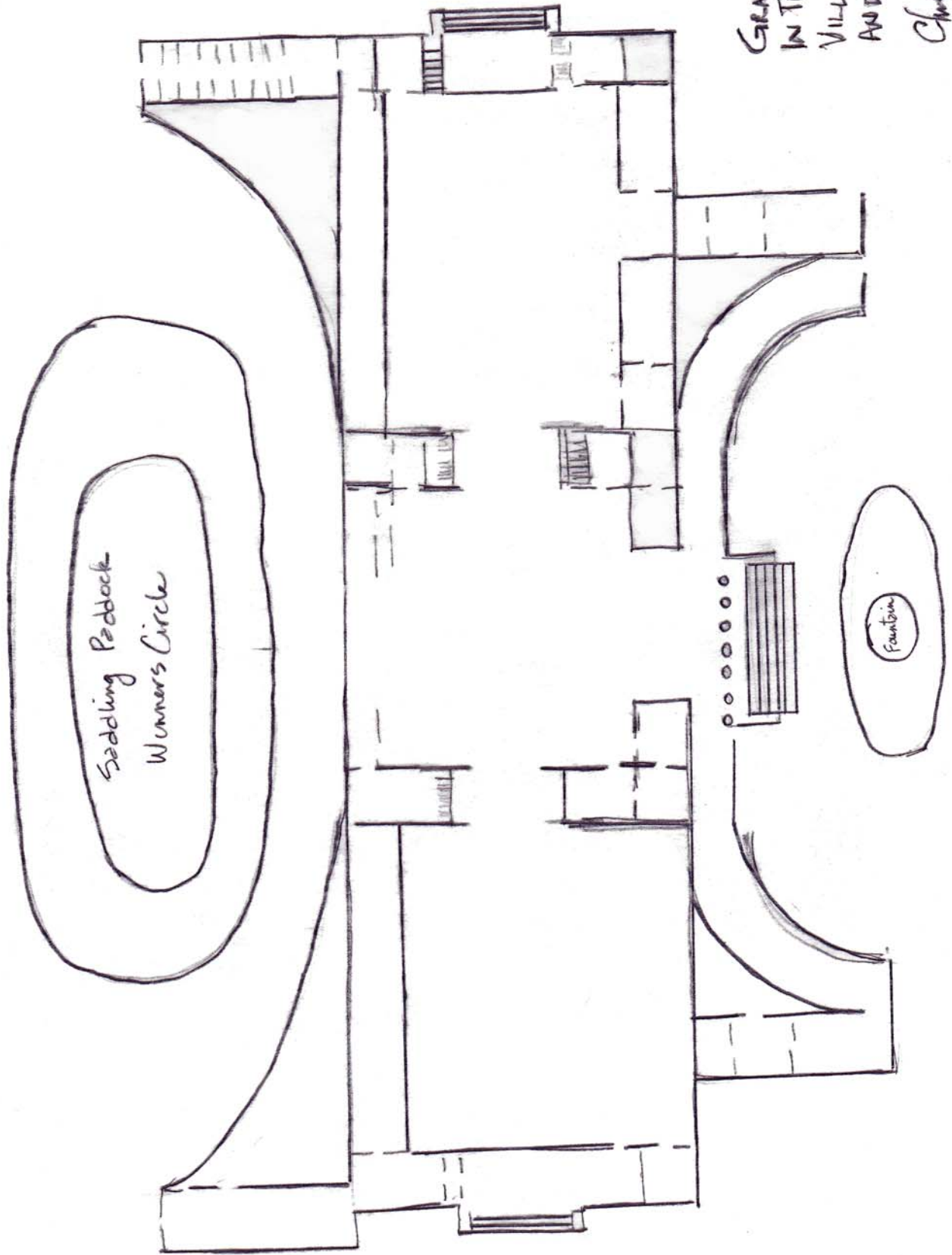
Published by

ISAAC WARE,

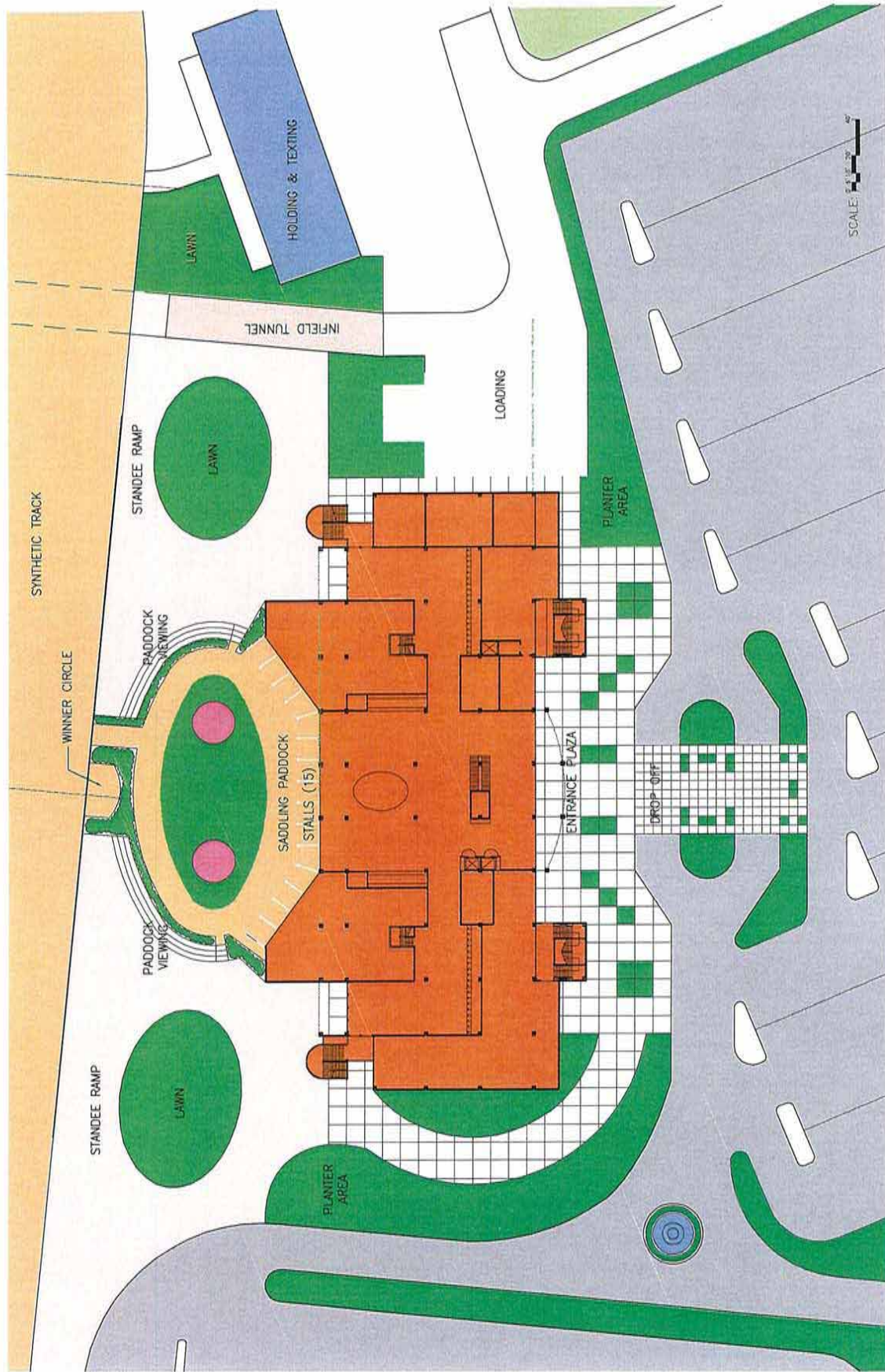
Anno MDCCXXXVIII.



— TRACK —



GRANDSTAND CONCEPT
IN THE MANNER OF
VILLA MOCENIGO
ANDREA PALLADIO
Christopher Korbey 10/06



New Thoroughbred
Racing Facility
900 Fairgrounds Drive
Vallejo California

PLAZA PLAN

SCALE: N.T.S.



**Fruehlich, Kow & Gong
Architects, Inc.**
868 Colorado Boulevard
Los Angeles, California 90041
Tel: (313) 252-0327
Fax: (313) 252-2326

DATE: 12-08-06

loggia's of the Ionick order. The columns of the first order of the front wou'd have been Ionick, and equal to those of the court; and those of the second, Corinthian. The hall wou'd have been quite free, of the size of the entrance, and raised up to the roof. Even with the floor of its soffita, it wou'd have had a corridor. The greater rooms wou'd have been ceiled, and the middling and smaller vaulted. On one side of this court wou'd have been rooms for the women, kitchen, and other places; and under ground, the cellars, the places for wood, and other conveniencies.

THE invention here placed, was made for the Count GIACOMO ANGARANO, for a site Plate 55. of his in the same city. The columns of the front are of the Composite order. The rooms near the entrance are one square and two thirds long. Next to them is a closet, and over that a mezzato. One then passes into a court encompassed with portico's. The columns are six and thirty feet long, and have behind them some pilasters, by VITRUVIUS called Parastaticæ, that support the pavement of the second loggia; over which there is another uncover'd, even with the floor of the last cieling of the house, and has corridors round it. Farther one finds another court, encompassed likewise with portico's. The first order of the columns is Dorick, the second Ionick, and in this the stairs are placed. In the opposite part to the stairs, there are the stables, and the kitchens might be made there, and the places for servants. As to the part above, the hall wou'd have been without columns, and its cieling wou'd have reached up to the roof. The rooms wou'd have been as high as they are broad; and there wou'd have been closets and mezzati, as they are in the lower part. Over the columns in the front a corridor might have been made, which on several occasions would have been very commodious.

IN *Verona*, at the *Portoni*, vulgarly called *Della Brà*, a most notable situation, the Count Plate 56. GIO. BATTISTA DELLA TORRE, sometime since intended to make the under placed fabrick, which wou'd have had gardens, and all those parts required in a commodious and delightful place. The first rooms wou'd have been vaulted, and over all the small ones there wou'd have been mezzati; to which the small stairs wou'd have served. The second rooms, that is, those above, wou'd have been cieled. The height of the hall wou'd have reached up to the roof; and even with the plane of the soffita, there wou'd have been a corridor or balcony; and from the loggia, and the windows placed in the flanks, it wou'd have received light.

I MADE also the following invention for the Cavalier GIO. BATTISTA GARZADORE, a *Vi-* Plate 57. *centine* gentleman, in which are two loggia's, one forwards, and the other backwards, of the Corinthian order. These loggia's have soffites, as also the ground hall; which is in the inmost part of the house, that it may be cool in the summer, and has two orders of windows. The four columns that appear, support the soffita, and make the pavement of the hall above strong and secure; which is square, and without columns, and as high as it is broad, and as much as the thickness of the cornice more. The height of the vaults of the greater rooms is according to the third manner for the height of vaults. The vaults of the closets are sixteen foot high. The rooms above are cieled. The columns of the second loggia's are of the Composite order, the fifth part less than those underneath. The loggia's have frontispieces, which (as I have said,) give no small grandeur to the fabrick; making it more elevated in the middle, than it is in the flanks, and serve to place the ensigns.

I MADE the following invention at the request of the Clarissimo Cavalier il Sig. LEO- Plate 58. NARDO MOCENICO, for a site of his upon the *Brenta*. Four loggia's, which like arms tend to the circumference, seem to receive those that come near the house. Near these loggia's are the stables, in the part forwards that looks over the river; and on the part backwards, the kitchens, and the places for the steward, and the farmer. The loggia in the middle of the front is thick of columns, which, because they are forty foot high, have behind them some pilasters two feet wide, and one foot and a quarter thick, that support the floor of the second loggia. And farther in, one finds the court encompassed with loggia's of the Ionick order. The portico's are as wide as the columns are long; one diameter of the column excepted. The loggia's and the rooms that look over the gardens, are also of the same breadth, that the wall which divides one member from the other, may be placed in the middle to sustain the weight of the roof. The first rooms wou'd have been very convenient to eat in, when a great number of persons should happen to have been there, and are in a double proportion. Those of the angles are square, and have their vaults *à schiffo*, as high up to the impost as the room is broad, and are cover'd one third of the breadth. The hall is two squares and an half long. The columns are put there to proportion the length and breadth to the height; and those columns wou'd have been in the ground hall only, that the hall above might have been quite free. The columns of the upper loggia's over the court are one fifth less than those underneath them, and are of the Corinthian order. The rooms above are as high as they are broad. The stairs are at the end of the court, and ascend or opposite to the other.

